

MULTIHULLCUP 2022

Notice

Date | 25 | 08 | 2022 | Time | 21 | 30 | Number | 3

From | Organising Authority | To | All Competitors

Amendment to the Sailing Instructions

(CHANGE)

9. MARKS

9.1. Windward/leeward courses:

Marks 1A, Offset A, 2	Gate 2S, 2P	Starting marks and finishing marks	New mark
Inflatable <u>orange</u>	Inflatable orange	RC vessel and pin end boat or inflatable <u>yellow</u> mark	Inflatable <u>yellow</u>

9.2 Coastal courses:

Course marks	Optional windward mark	Starting marks	Finish Marks
See Appendix 2	Inflatable <u>yellow</u>	RC vessel and pin end boat or inflatable <u>yellow</u> mark	RC vessel and Buoy with blue flag

MULTIHULLCUP 2022

(CHANGE)

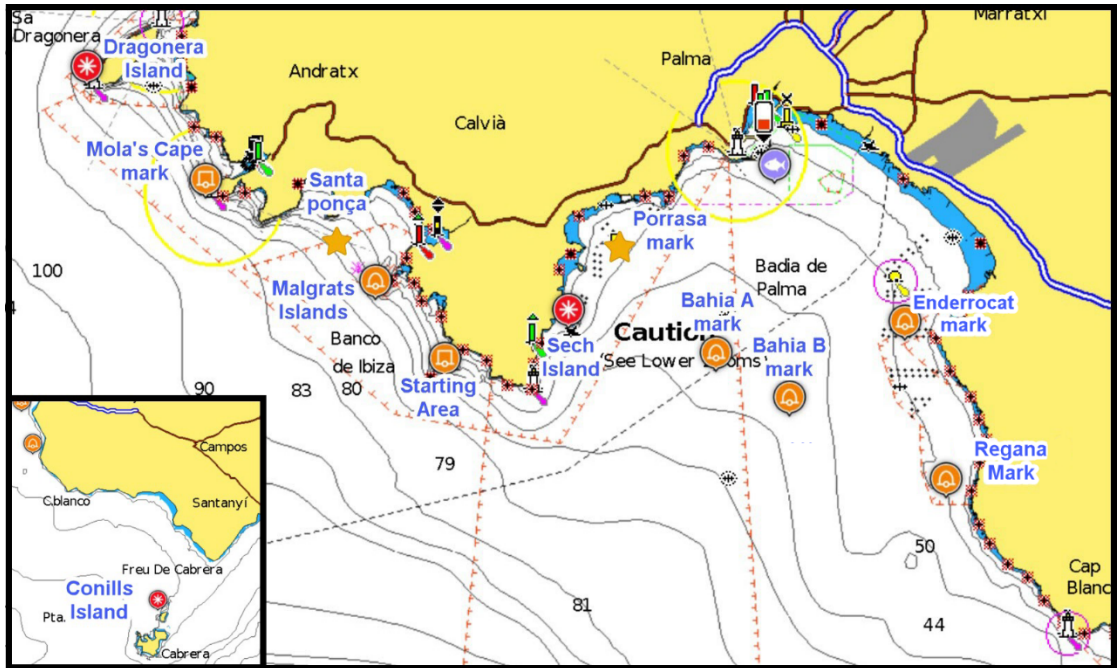
APPENDIX 2 COASTAL COURSES

20 minutes before the warning signal the Race Committee will announce by radio VHF and email, the course to be sailed, order to pass the marks and how to be passed. Marks to be used will be the ones described in the following diagram.

MARKS	MARK	DESCRIPTION	APROXIMATE POSITION
	Optional windward mark	<u>Yellow inflatable mark</u>	Distance and bearing from Race Committee
	Dragonera Island	Island	
	Sech Island	Island	
	Conills Island	Island	
	Malgrats Island mark	<u>Orange</u> inflatable mark	39° 29,354 N/002° 26,685 E
	Mola's Cape mark	Orange inflatable mark	39° 31,699 N/002° 21,622 E
	Enderrocat mark	<u>Orange</u> inflatable mark	39° 28,426 N/002° 42,457 E
	Regana mark	<u>Orange</u> inflatable mark	39° 24,790 N/002° 43,677 E
	Santa Ponsa mark	<u>Orange</u> inflatable mark	39° 30,529 N/002° 25,474 E
	Bahía A mark	<u>Orange</u> inflatable mark	39° 27,699 N/002° 36,816 E
	Bahía B mark	<u>Orange</u> inflatable mark	39° 26,679 N/002° 38,997 E
	Porrassa mark	<u>Orange</u> inflatable mark	39° 29,482 N/002° 33,930 E
	<u>Starting Area – Finishing Area</u>	<u>See SI 9.2</u>	<u>39° 27,609 N/002° 29.099 E / See SI 7.2</u>

INFORMATION

MULTIHULLCUP 2022



[Regana Mark and Enderrocat Mark positions has been changed.]